

2025-2026 Dubuque Symphony Youth Ensembles Audition Information

String Ensemble

Viola

Scales

- Perform all scales listed for your instrument, paying close attention to tone, intonation, evenness, and rhythmic accuracy.

Excerpts

- Excerpts do not need to be memorized
- Prepare the excerpts in this packet to the best of your ability. Be sure to pay attention to the key signature, time signature, rhythms, slurs, strong tone, and artistic playing.
- If you are unfamiliar with the excerpt, you can consult with your private or school teacher. You can also listen to a recording or live performance of the piece in order to give yourself the proper style, tempo, and musical context.

Orchestra Placement

- The primary criterion for placement is the student's playing, which includes factors such as tone quality, technique, correct instrument position, musicality, and accuracy of pitch and rhythm.
- *Please note:* Spring 2025 auditions are used only to determine ensemble placement for the 2025-2026 season. Seating within the ensemble may change throughout the season.
- **Tuition Assistance:** The DSYE is committed to serving all students, and no student will be denied membership in the ensembles due to financial concerns. Any student requiring assistance is encouraged to learn more at: <https://dubuquesymphony.org/youth-ensembles>

Orchestra Expectations

- Students are expected to practice their music in between rehearsals to a high artistic level.
- Students are expected to exhibit mature, respectful rehearsal behavior.

All questions, comments, and inquiries can be directed to:
Hannah Von Mulert, Director of Education & Outreach
hvonmulert@dubuquesymphony.org | 563-557-1677

STRING ENSEMBLE AUDITION SCALES

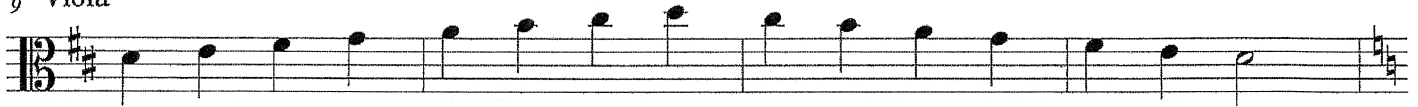
Violin



5



9 Viola



13



17 Cello



21



Bass

25



29



Dubuque Youth String Ensemble
Viola Audition Sheet

Tempo: Quarter note = approx. 104 for all excerpts

Excerpt 1 - *Falconer* by Doug Spata
mm 48-63

45 46 47 *f* 48 Start

49 50 51 52

53 54 55 56

57 58 59 60

61 62 63 End

Excerpt 2 - *C Here* by Seth Gamba
mm 67-74

mp

65

67 **Start** aggressively

f

70

75

End

Excerpt 3- Beginning to downbeat of 17

SCHUMANN
Arranged by Denis Wright

Not fast

p

mf

rit. a tempo

p

End