



2728 Asbury Road, Suite 900
Dubuque, IA 52001
Phone (563) 557.1677
Fax (563) 557.9841
www.dubuquesymphony.org

2026-2027 Dubuque Symphony Youth Ensembles Audition Information

Wind Ensemble

French Horn

Scales

- Perform all "Set 1" scales listed on your scale sheet, as well as the chromatic scale listed at the bottom.

Excerpts

- Excerpts do not need to be memorized
- Prepare the excerpts in this packet to the best of your ability. Be sure to pay attention to the key signature, time signature, rhythms, slurs, strong tone, and artistic playing.
- If you have questions about the excerpt, you can consult with your private or school teacher.

Orchestra Placement

- The primary criterion for placement is the student's playing, which includes factors such as tone quality, technique, correct instrument position, musicality, and accuracy of pitch and rhythm.
- *Please note:* Spring 2026 auditions are used only to determine ensemble placement for the 2026-2027 season. Seating within the ensemble may change throughout the season.
- **Tuition Assistance:** The DSYE is committed to serving all students, and no student will be denied membership in the ensembles due to financial concerns. Any student requiring assistance is encouraged to learn more at: <https://dubuquesymphony.org/youth-ensembles>

Orchestra Expectations

- Students are expected to practice their music in between rehearsals to a high artistic level.
- Students are expected to exhibit mature, respectful rehearsal behavior.
- Students are expected to keep their attendance in good standing, missing no more than 2 rehearsals per trimester.

All questions, comments, and inquiries can be directed to:
Hannah Von Mulert, Director of Education & Outreach
hvonmulert@dubuquesymphony.org | 563.557.1677

Horn

SET 1

Concert C Major



Concert E \flat Major



Concert D \flat Major



Concert G Major



SET 2

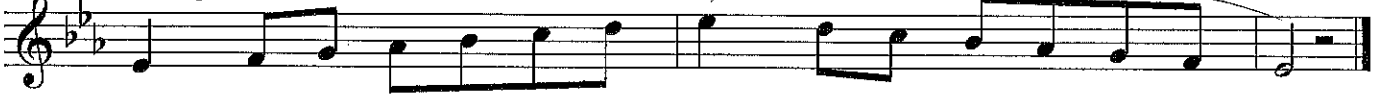
Concert F Major



Concert B \flat Major



Concert A \flat Major

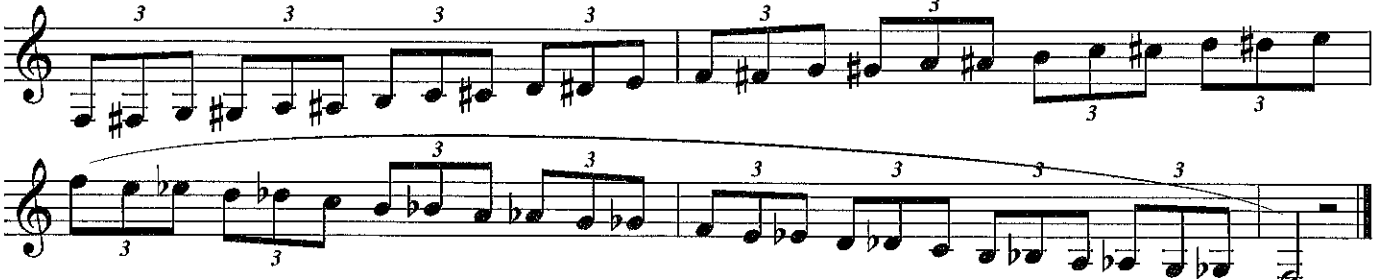


Concert D Major



SET 1 & SET 2

Chromatic Scale



French Horn

Etude #1

Musical score for Etude #1, French Horn. The piece is in F major and 4/4 time. It consists of 16 measures. The first measure starts with a piano (*p*) dynamic. The score is divided into four systems of four measures each. Measures 1-4 are marked with a first ending bracket. Measures 5-8 are marked with a second ending bracket. Measure 8 ends with a forte (*f*) dynamic. Measures 9-12 are marked with a first ending bracket. Measures 13-16 are marked with a piano (*p*) dynamic. The piece concludes with a double bar line at the end of measure 16.

Etude #2

Musical score for Etude #2, French Horn. The piece is in F major and 3/4 time. It consists of 16 measures. The first measure starts with a piano (*p*) dynamic. The score is divided into four systems of four measures each. Measures 1-4 are marked with a piano (*p*) dynamic. Measures 3-4 are marked with a crescendo (*cresc.*). Measures 5-8 are marked with a piano (*p*) dynamic. Measures 9-12 are marked with a mezzo-forte (*mf*) dynamic. Measures 13-16 are marked with a piano (*p*) dynamic. The piece concludes with a double bar line at the end of measure 16.