

2026-2027 Dubuque Symphony Youth Ensembles Audition Information

Wind Ensemble

Clarinet

Scales

- Perform all "Set 1" scales listed on your scale sheet, as well as the chromatic scale listed at the bottom.

Excerpts

- Excerpts do not need to be memorized
- Prepare the excerpts in this packet to the best of your ability. Be sure to pay attention to the key signature, time signature, rhythms, slurs, strong tone, and artistic playing.
- If you have questions about the excerpt, you can consult with your private or school teacher.

Orchestra Placement

- The primary criterion for placement is the student's playing, which includes factors such as tone quality, technique, correct instrument position, musicality, and accuracy of pitch and rhythm.
- *Please note:* Spring 2026 auditions are used only to determine ensemble placement for the 2026-2027 season. Seating within the ensemble may change throughout the season.
- **Tuition Assistance:** The DSYE is committed to serving all students, and no student will be denied membership in the ensembles due to financial concerns. Any student requiring assistance is encouraged to learn more at: <https://dubuquesymphony.org/youth-ensembles>

Orchestra Expectations

- Students are expected to practice their music in between rehearsals to a high artistic level.
- Students are expected to exhibit mature, respectful rehearsal behavior.
- Students are expected to keep their attendance in good standing, missing no more than 2 rehearsals per trimester.

All questions, comments, and inquiries can be directed to:
Hannah Von Mulert, Director of Education & Outreach
hvonmulert@dubuquesymphony.org | 563.557.1677

Clarinet

SET 1

Concert C Major



Concert E \flat Major



Concert D \flat Major



Concert G Major



SET 2

Concert F Major



Concert B \flat Major



Concert A \flat Major

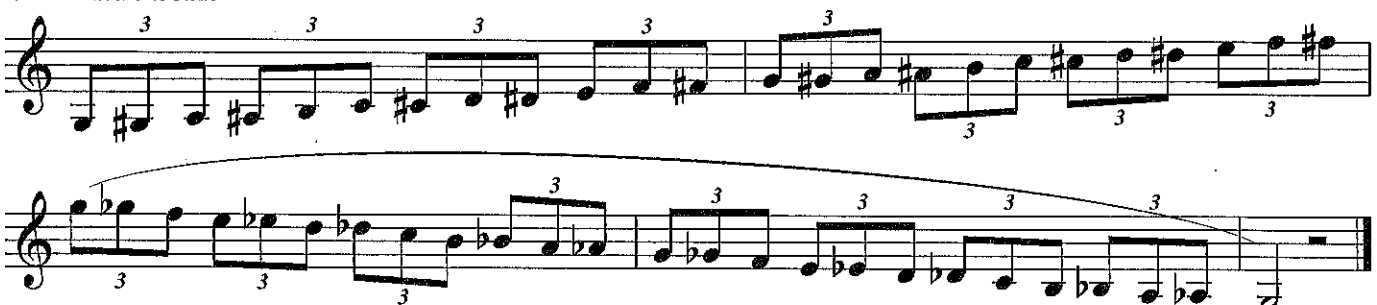


Concert D Major



SET 1 & SET 2

Chromatic Scale



Bb Clarinet

ANDANTINO

BERR

Etude #1

Etude #1 is written for Bb Clarinet in 4/4 time. The score consists of 16 measures across four staves. The key signature has one flat (Bb). The piece begins with a piano (*p*) dynamic. Measures 1-4 feature a melodic line with slurs and accents. Measures 5-8 continue the melodic development. Measures 9-12 show a more active melodic line. Measures 13-16 conclude the piece with a piano (*p*) dynamic. The score includes various musical notations such as slurs, accents, and dynamic markings.

Etude #2

Etude #2 is written for Bb Clarinet in 3/4 time. The score consists of 16 measures across four staves. The key signature has two flats (Bb and Eb). The piece begins with a piano (*p*) dynamic. Measures 1-4 feature a rhythmic pattern of eighth notes. Measures 5-8 continue the rhythmic pattern. Measures 9-12 show a more active rhythmic pattern. Measures 13-16 conclude the piece with a piano (*p*) dynamic. The score includes various musical notations such as slurs, accents, and dynamic markings.