

2728 Asbury Road, Suite 900
Dubuque, IA 52001
Phone (563) 557.1677
Fax (563) 557.9841
www.dubuquesymphony.org

2026-2027 Dubuque Symphony Youth Ensembles Audition Information

Wind Ensemble

Bass Clarinet

Scales

- Perform all "Set 1" scales listed on your scale sheet, as well as the chromatic scale listed at the bottom.

Excerpts

- Excerpts do not need to be memorized
- Prepare the excerpts in this packet to the best of your ability. Be sure to pay attention to the key signature, time signature, rhythms, slurs, strong tone, and artistic playing.
- If you have questions about the excerpt, you can consult with your private or school teacher.

Orchestra Placement

- The primary criterion for placement is the student's playing, which includes factors such as tone quality, technique, correct instrument position, musicality, and accuracy of pitch and rhythm.
- *Please note:* Spring 2026 auditions are used only to determine ensemble placement for the 2026-2027 season. Seating within the ensemble may change throughout the season.
- **Tuition Assistance:** The DSYE is committed to serving all students, and no student will be denied membership in the ensembles due to financial concerns. Any student requiring assistance is encouraged to learn more at: <https://dubuquesymphony.org/youth-ensembles>

Orchestra Expectations

- Students are expected to practice their music in between rehearsals to a high artistic level.
- Students are expected to exhibit mature, respectful rehearsal behavior.
- Students are expected to keep their attendance in good standing, missing no more than 2 rehearsals per trimester.

All questions, comments, and inquiries can be directed to:
Hannah Von Mulert, Director of Education & Outreach
hvonmulert@dubuquesymphony.org | 563.557.1677

Bass Clarinet

SET 1

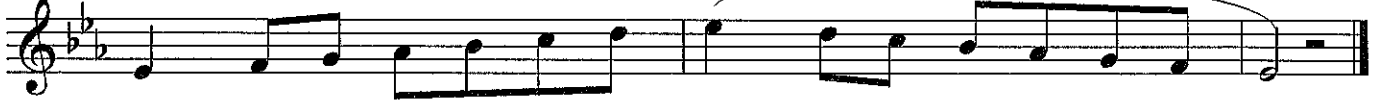
Concert C Major



Concert E \flat Major



Concert D \flat Major



Concert G Major



SET 2

Concert F Major



Concert B \flat Major



Concert A \flat Major

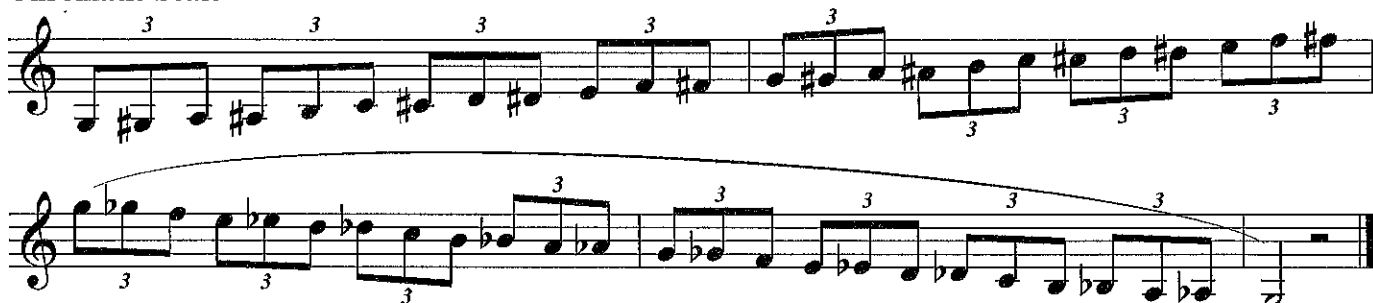


Concert D Major



SET 1 & SET 2

Chromatic Scale



Bass Clarinet

ANDANTINO

BERR

Etude #1

Etude #1 is written for Bass Clarinet in B-flat major (one flat) and 4/4 time. It begins with a piano (*p*) dynamic. The piece consists of 16 measures across four staves. The first staff contains measures 1-4, the second staff contains measures 5-8, the third staff contains measures 9-12, and the fourth staff contains measures 13-16. The melody features a mix of eighth and sixteenth notes, often beamed together, with some notes tied across bar lines. A crescendo hairpin is visible under measures 14 and 15.

Etude #2

Etude #2 is written for Bass Clarinet in B-flat major (one flat) and 3/4 time. It begins with a piano (*p*) dynamic. The piece consists of 16 measures across four staves. The first staff contains measures 1-4, the second staff contains measures 5-8, the third staff contains measures 9-12, and the fourth staff contains measures 13-16. The melody is primarily composed of eighth and sixteenth notes, often beamed together. Dynamics include piano (*p*), mezzo-forte (*mf*), and a crescendo (*cresc.*) leading to a piano (*p*) dynamic. Accents (>) are placed over measures 14, 15, and 16.