



2728 Asbury Road, Suite 900  
Dubuque, IA 52001  
Phone (563) 557.1677  
Fax (563) 557.9841  
[www.dubuquesymphony.org](http://www.dubuquesymphony.org)

## 2025-2026 Dubuque Symphony Youth Ensembles Audition Information

### Wind Ensemble

#### French Horn

##### Scales

- Perform all "Set 1" scales listed on your scale sheet, as well as the chromatic scale listed at the bottom.

##### Excerpts

- Prepare the excerpts in this packet to the best of your ability. Be sure to pay attention to the key signature, time signature, rhythms, slurs, strong tone, and artistic playing.
- If you have questions about the excerpt, you can consult with your private or school teacher.

##### Ensemble Placement

- The primary criterion for placement is the student's playing, which includes factors such as tone quality, technique, correct instrument position, musicality, and accuracy of pitch and rhythm.
- Please note: Spring 2025 auditions are used only to determine ensemble placement for the 2025-2026 season. Seating within the ensemble may change throughout the season.
- Tuition Assistance: The DSYE is committed to serving all students, and no student will be denied membership in the ensembles due to financial concerns. Any student requiring assistance is encouraged to learn more at: <https://dubuquesymphony.org/youth-ensembles>

##### Ensemble Expectations

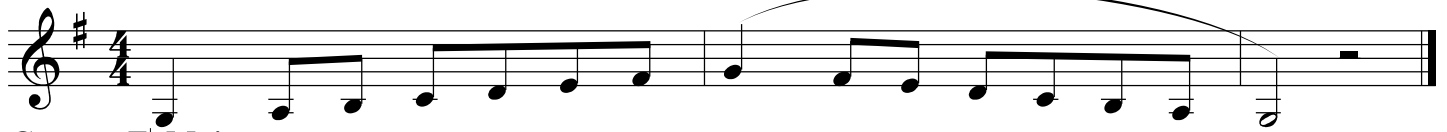
- Students are expected to practice their music in between rehearsals to a high artistic level.
- Students are expected to exhibit mature, respectful rehearsal behavior.

All questions, comments, and inquiries can be directed to:  
Hannah Von Mulert, Director of Education & Outreach  
[hvonmulert@dubuquesymphony.org](mailto:hvonmulert@dubuquesymphony.org) | 563.557.1677

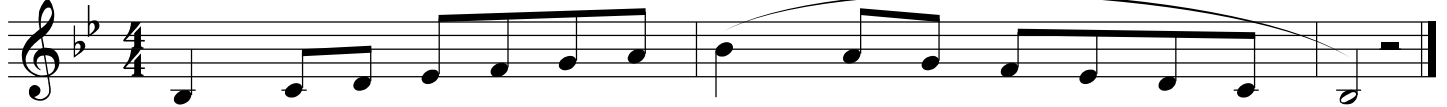
# Horn

## SET 1

Concert C Major



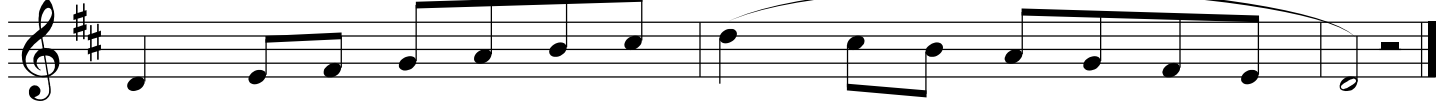
Concert E $\flat$  Major



Concert D $\flat$  Major

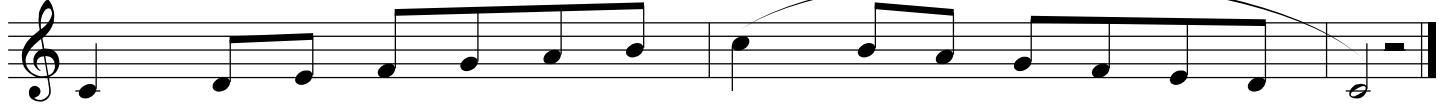


Concert G Major



## SET 2

Concert F Major



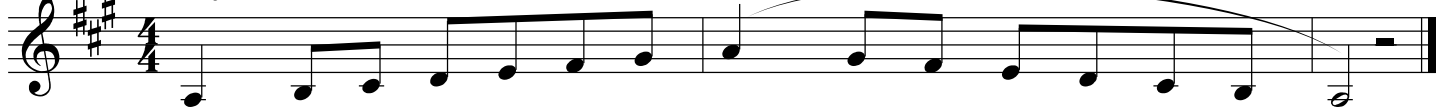
Concert B $\flat$  Major



Concert A $\flat$  Major

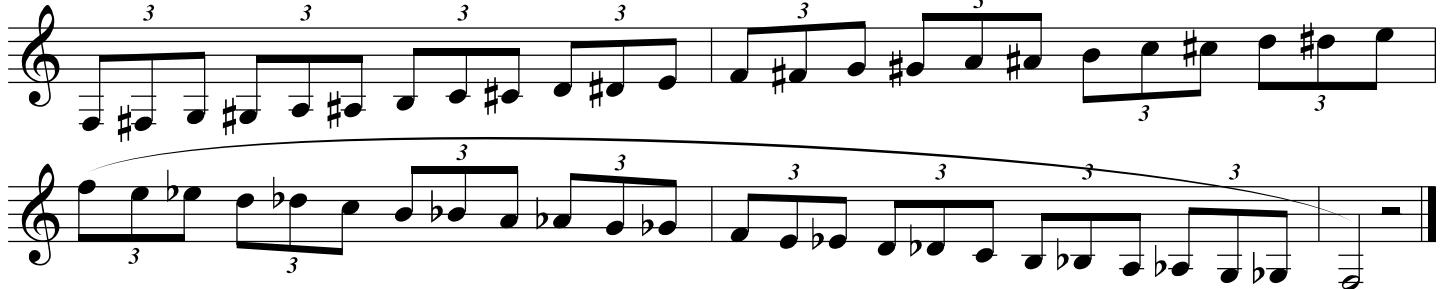


Concert D Major



## SET 1 & SET 2

Chromatic Scale



# French Horn

## Etude #1

Etude #1 is a 16-measure exercise in 4/4 time, written for French Horn. The key signature has one flat (B-flat). The piece begins with a dynamic marking of *p* (piano) and features a melodic line with various articulations and slurs. Measures 1-4 are marked with numbers 1, 2, 3, and 4. Measures 5-8 are marked with numbers 5, 6, 7, and 8. Measures 9-12 are marked with numbers 9, 10, 11, and 12. Measures 13-16 are marked with numbers 13, 14, 15, and 16. The piece concludes with a dynamic marking of *f* (forte) at the end of measure 8.

## Etude #2

Etude #2 is a 16-measure exercise in 4/4 time, written for French Horn. The key signature has one flat (B-flat). The piece begins with a dynamic marking of *p* (piano) and features a melodic line with various articulations and slurs. Measures 1-4 are marked with numbers 1, 2, 3, and 4. Measures 5-8 are marked with numbers 5, 6, 7, and 8. Measures 9-12 are marked with numbers 9, 10, 11, and 12. Measures 13-16 are marked with numbers 13, 14, 15, and 16. The piece includes dynamic markings of *cresc. cresc.* (crescendo) between measures 3 and 4, *mf* (mezzo-forte) between measures 7 and 8, and *p* (piano) at the end of measure 8.