



2728 Asbury Road, Suite 900
Dubuque, IA 52001
Phone (563) 557.1677
Fax (563) 557.9841
www.dubuquesymphony.org

2025-2026 Dubuque Symphony Youth Ensembles Audition Information

Wind Ensemble

Flute

Scales

- Perform all "Set 1" scales listed on your scale sheet, as well as the chromatic scale listed at the bottom.

Excerpts

- Prepare the excerpts in this packet to the best of your ability. Be sure to pay attention to the key signature, time signature, rhythms, slurs, strong tone, and artistic playing.
- If you have questions about the excerpt, you can consult with your private or school teacher.

Ensemble Placement

- The primary criterion for placement is the student's playing, which includes factors such as tone quality, technique, correct instrument position, musicality, and accuracy of pitch and rhythm.
- Please note: Spring 2025 auditions are used only to determine ensemble placement for the 2025-2026 season. Seating within the ensemble may change throughout the season.
- Tuition Assistance: The DSYE is committed to serving all students, and no student will be denied membership in the ensembles due to financial concerns. Any student requiring assistance is encouraged to learn more at: <https://dubuquesymphony.org/youth-ensembles>

Ensemble Expectations

- Students are expected to practice their music in between rehearsals to a high artistic level.
- Students are expected to exhibit mature, respectful rehearsal behavior.

All questions, comments, and inquiries can be directed to:
Hannah Von Mulert, Director of Education & Outreach
hvonmulert@dubuquesymphony.org | 563.557.1677

Flute

SET 1

Concert C Major



Concert E \flat Major



Concert D \flat Major



Concert G Major

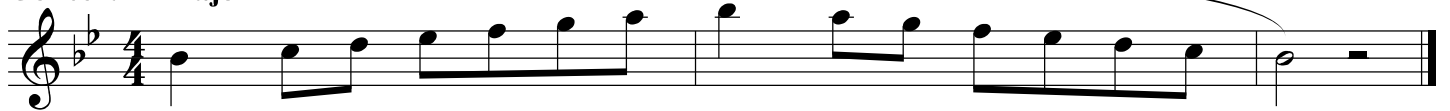


SET 2

Concert F Major



Concert B \flat Major



Concert A \flat Major

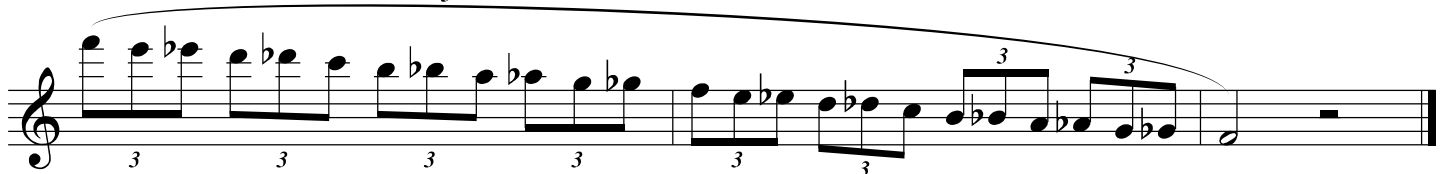


Concert D Major



SET 1 & SET 2

Chromatic Scale



Flute

ANDANTINO

BERR

Etude #1

FLUTE

1 *p* 2 3 4
5 6 7 8 *f*
9 10 11 12
13 *p* 14 15 16

Etude #2

into C

1 *p* 2 3 *cresc.* 4 *p*
5 6 7 *mf* 8 *p*
9 *mf* 10 11 12
13 14 15 16