



2728 Asbury Road, Suite 900  
Dubuque, IA 52001  
Phone (563) 557.1677  
Fax (563) 557.9841  
[www.dubuquesymphony.org](http://www.dubuquesymphony.org)

## 2024-2025 Dubuque Symphony Youth Ensembles Audition Information

### Wind Ensemble

#### Trombone

##### Scales

- Perform all "Set 1" scales listed on your scale sheet, as well as the chromatic scale listed at the bottom.

##### Etudes

- Prepare the etudes in this packet to the best of your ability. Be sure to pay attention to the key signature, time signature, rhythms, slurs, strong tone, and artistic playing.
- If you have questions about the excerpt, you can consult with your private or school teacher.

##### Ensemble Placement

- The primary criterion for placement is the student's playing, which includes factors such as tone quality, technique, correct instrument position, musicality, and accuracy of pitch and rhythm.
- Please note: Spring 2024 auditions are used only to determine ensemble placement for the 2024-2025 season. Seating within the ensemble may change throughout the season.
- Tuition Assistance: The DSYE is committed to serving all students, and no student will be denied membership in the ensembles due to financial concerns. Any student requiring assistance is encouraged to learn more at: <https://dubuquesymphony.org/youth-ensembles>

##### Ensemble Expectations

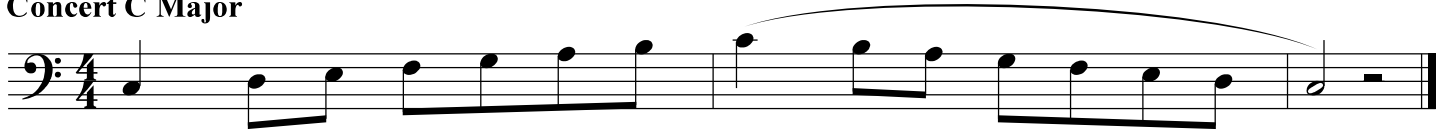
- Students are expected to practice their music in between rehearsals to a high artistic level.
- Students are expected to exhibit mature, respectful rehearsal behavior.

All questions, comments, and inquiries can be directed to:  
Hannah Von Mulert, Director of Education & Outreach  
[hvonmulert@dubuquesymphony.org](mailto:hvonmulert@dubuquesymphony.org) | 563.557.1677

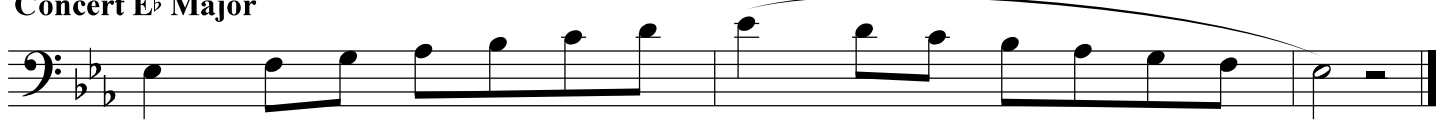
# Trombone

## SET 1

### Concert C Major



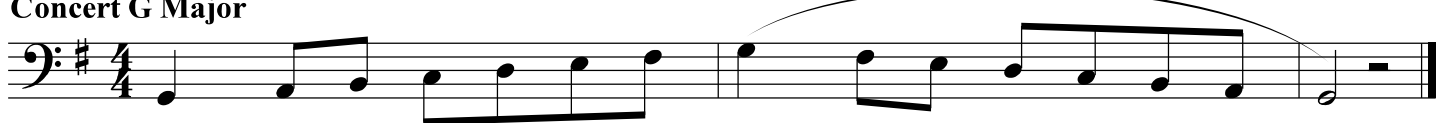
### Concert E $\flat$ Major



### Concert D $\flat$ Major

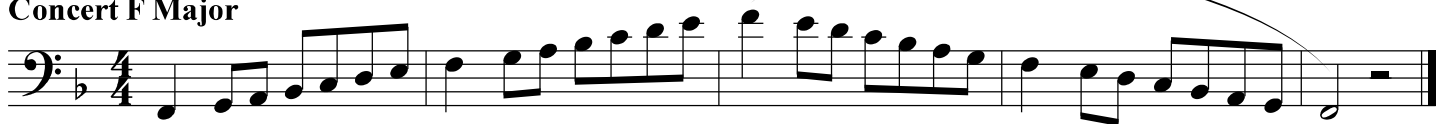


### Concert G Major

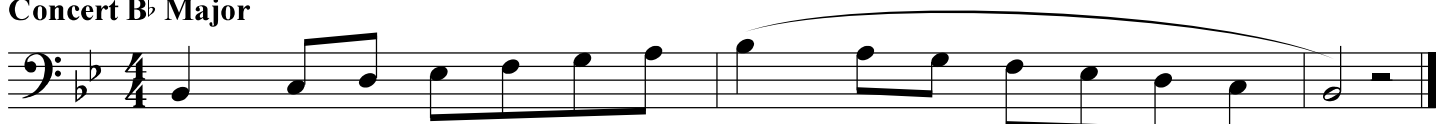


## SET 2

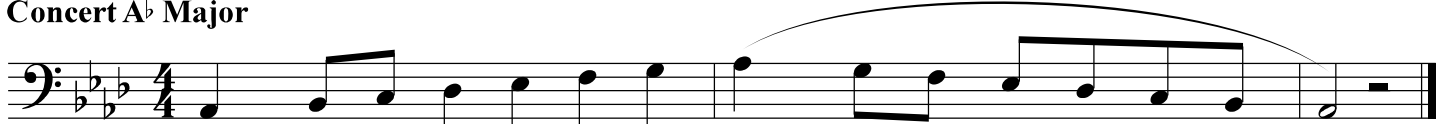
### Concert F Major



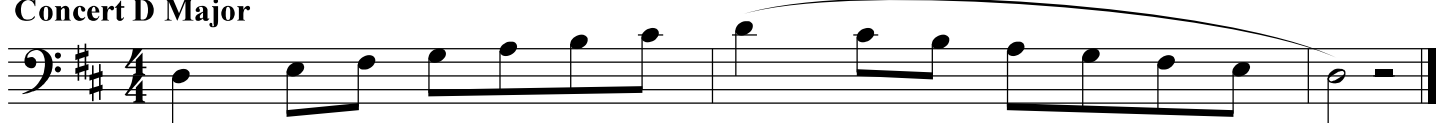
### Concert B $\flat$ Major



### Concert A $\flat$ Major

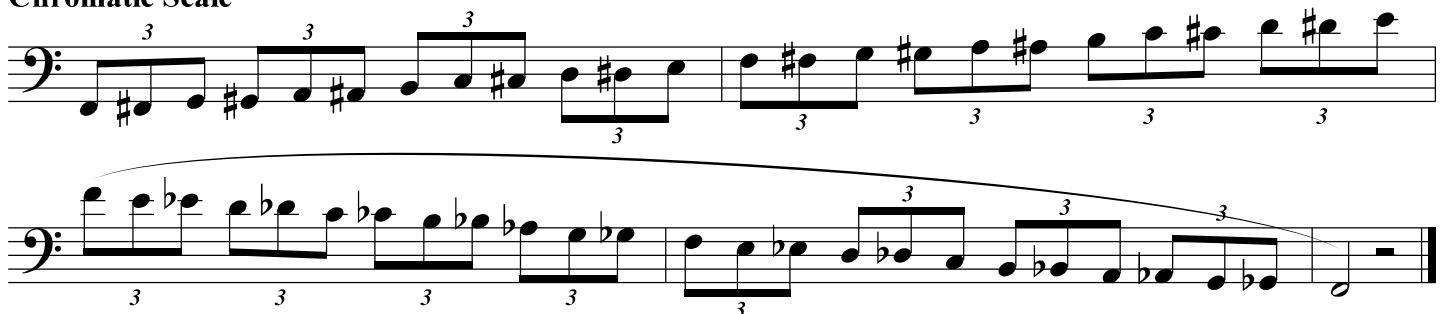


### Concert D Major



## SET 1 & SET 2

### Chromatic Scale



# Trombone

## Etude #1

Etude #1 is written in bass clef, 4/4 time, and B-flat major. It consists of 16 measures. The score is divided into four systems of four measures each. Measure 1 starts with a piano (*p*) dynamic. Measures 1-4 feature a melodic line with slurs and accents. Measures 5-8 continue the melodic development, with a forte (*f*) dynamic at the end of measure 8. Measures 9-12 show further melodic progression. Measures 13-16 conclude the piece, with a piano (*p*) dynamic at the start of measure 13 and a crescendo leading to a final measure.

## Etude #2

Etude #2 is written in bass clef, 3/4 time, and B-flat major. It consists of 16 measures. The score is divided into four systems of four measures each. Measure 1 starts with a piano (*p*) dynamic. Measures 1-4 feature a rhythmic pattern of eighth notes with slurs and accents, and a crescendo (*cresc.*) leading to a piano (*p*) dynamic at the end of measure 4. Measures 5-8 continue the rhythmic pattern, with a mezzo-forte (*mf*) dynamic at the start of measure 7 and a piano (*p*) dynamic at the end of measure 8. Measures 9-12 show further rhythmic development, with a mezzo-forte (*mf*) dynamic at the start of measure 9. Measures 13-16 conclude the piece, with accents (>) over the notes in measures 13-15.