



2728 Asbury Road, Suite 900  
Dubuque, IA 52001  
Phone (563) 557.1677  
Fax (563) 557.9841  
[www.dubuquesymphony.org](http://www.dubuquesymphony.org)

## 2024-2025 Dubuque Symphony Youth Ensembles Audition Information

### Wind Ensemble

### Tenor Saxophone

#### Scales

- Perform all "Set 1" scales listed on your scale sheet, as well as the chromatic scale listed at the bottom.

#### Etudes

- Prepare the etudes in this packet to the best of your ability. Be sure to pay attention to the key signature, time signature, rhythms, slurs, strong tone, and artistic playing.
- If you have questions about the excerpt, you can consult with your private or school teacher.

#### Ensemble Placement

- The primary criterion for placement is the student's playing, which includes factors such as tone quality, technique, correct instrument position, musicality, and accuracy of pitch and rhythm.
- Please note: Spring 2024 auditions are used only to determine ensemble placement for the 2024-2025 season. Seating within the ensemble may change throughout the season.
- Tuition Assistance: The DSYE is committed to serving all students, and no student will be denied membership in the ensembles due to financial concerns. Any student requiring assistance is encouraged to learn more at: <https://dubuquesymphony.org/youth-ensembles>

#### Ensemble Expectations

- Students are expected to practice their music in between rehearsals to a high artistic level.
- Students are expected to exhibit mature, respectful rehearsal behavior.

All questions, comments, and inquiries can be directed to:  
Hannah Von Mulert, Director of Education & Outreach  
[hvonmulert@dubuquesymphony.org](mailto:hvonmulert@dubuquesymphony.org) | 563.557.1677

# Tenor Sax

## SET 1

Concert C Major



Concert E $\flat$  Major



Concert D $\flat$  Major

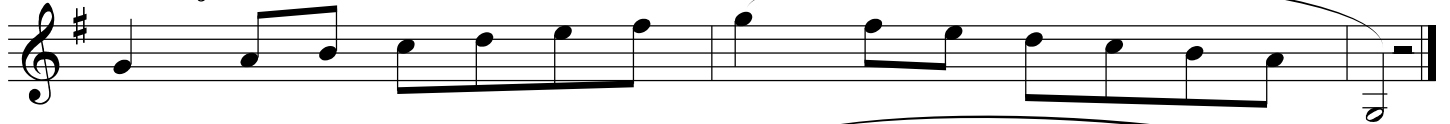


Concert G Major



## SET 2

Concert F Major



Concert B $\flat$  Major



Concert A $\flat$  Major



Concert D Major



## SET 1 & SET 2

Chromatic Scale



# Tenor Saxophone

ANDANTINO

BERR

## Etude #1

Etude #1 is written for Tenor Saxophone in Bb major, 4/4 time. It begins with a piano (*p*) dynamic. The piece consists of 16 measures, with measures 1 through 4 forming the first line, 5 through 8 the second, 9 through 12 the third, and 13 through 16 the fourth. The melody is characterized by flowing eighth and sixteenth notes, often grouped in pairs or fours. A crescendo hairpin is used between measures 13 and 15, leading to a fortissimo (*f*) dynamic at the end of measure 16.

## Etude #2

Etude #2 is written for Tenor Saxophone in Bb major, 3/4 time. It begins with a piano (*p*) dynamic. The piece consists of 16 measures, with measures 1 through 4 forming the first line, 5 through 8 the second, 9 through 12 the third, and 13 through 16 the fourth. The melody features a mix of eighth and sixteenth notes, with some dotted rhythms. Dynamics include piano (*p*), mezzo-forte (*mf*), and crescendo (*cresc.*). Accents (>) are placed over measures 14 and 15. The piece concludes with a fortissimo (*f*) dynamic in measure 16.