



2728 Asbury Road, Suite 900  
Dubuque, IA 52001  
Phone (563) 557.1677  
Fax (563) 557.9841  
[www.dubuquesymphony.org](http://www.dubuquesymphony.org)

## 2024-2025 Dubuque Symphony Youth Ensembles Audition Information

### Wind Ensemble

#### Bassoon

##### Scales

- Perform all "Set 1" scales listed on your scale sheet, as well as the chromatic scale listed at the bottom.

##### Etudes

- Prepare the etudes in this packet to the best of your ability. Be sure to pay attention to the key signature, time signature, rhythms, slurs, strong tone, and artistic playing.
- If you have questions about the excerpt, you can consult with your private or school teacher.

##### Ensemble Placement

- The primary criterion for placement is the student's playing, which includes factors such as tone quality, technique, correct instrument position, musicality, and accuracy of pitch and rhythm.
- Please note: Spring 2024 auditions are used only to determine ensemble placement for the 2024-2025 season. Seating within the ensemble may change throughout the season.
- Tuition Assistance: The DSYE is committed to serving all students, and no student will be denied membership in the ensembles due to financial concerns. Any student requiring assistance is encouraged to learn more at: <https://dubuquesymphony.org/youth-ensembles>

##### Ensemble Expectations

- Students are expected to practice their music in between rehearsals to a high artistic level.
- Students are expected to exhibit mature, respectful rehearsal behavior.

All questions, comments, and inquiries can be directed to:  
Hannah Von Mulert, Director of Education & Outreach  
[hvonmulert@dubuquesymphony.org](mailto:hvonmulert@dubuquesymphony.org) | 563.557.1677

# Bassoon

## SET 1

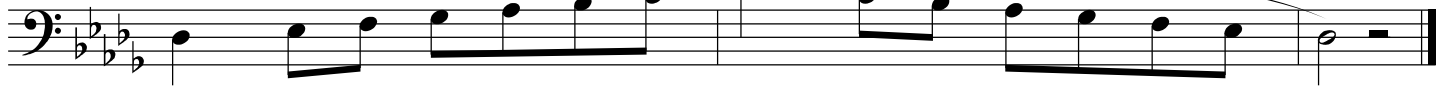
Concert C Major



Concert E $\flat$  Major



Concert D $\flat$  Major



Concert G Major



## SET 2

Concert F Major



Concert B $\flat$  Major



Concert A $\flat$  Major



Concert D Major



## SET 1 & SET 2

Chromatic Scale



# Bassoon

## Etude #1

Etude #1 is written for Bassoon in 4/4 time. The score consists of four staves of music, numbered 1 through 16. The key signature has two flats (B-flat and E-flat). The piece begins with a piano (*p*) dynamic. The first staff contains measures 1-4, with a slur over measures 1-2 and a crescendo hairpin starting at measure 2. The second staff contains measures 5-8, with a slur over measures 5-7 and a fortissimo (*f*) dynamic marking at the end. The third staff contains measures 9-12, with slurs over measures 9-10 and 11-12. The fourth staff contains measures 13-16, with a piano (*p*) dynamic marking at the beginning, a slur over measures 13-14, and a crescendo hairpin starting at measure 14.

## Etude #2

Etude #2 is written for Bassoon in 3/4 time. The score consists of four staves of music, numbered 1 through 16. The key signature has two flats (B-flat and E-flat). The piece begins with a piano (*p*) dynamic. The first staff contains measures 1-4, with a piano (*p*) dynamic marking at the beginning, a crescendo hairpin starting at measure 3, and a fortissimo (*f*) dynamic marking at the end. The second staff contains measures 5-8, with a mezzo-forte (*mf*) dynamic marking at the beginning, a crescendo hairpin starting at measure 7, and a piano (*p*) dynamic marking at the end. The third staff contains measures 9-12, with a mezzo-forte (*mf*) dynamic marking at the beginning and slurs over measures 9-10, 11-12, and 13-14. The fourth staff contains measures 13-16, with slurs over measures 13-14, 15-16, and 17-18, and a mezzo-forte (*mf*) dynamic marking at the beginning.