



2728 Asbury Road, Suite 900
Dubuque, IA 52001
Phone (563) 557.1677
Fax (563) 557.9841
www.dubuquesymphony.org

2024-2025 Dubuque Symphony Youth Ensembles Audition Information

Wind Ensemble

Bari Saxophone

Scales

- Perform all "Set 1" scales listed on your scale sheet, as well as the chromatic scale listed at the bottom.

Etudes

- Prepare the etudes in this packet to the best of your ability. Be sure to pay attention to the key signature, time signature, rhythms, slurs, strong tone, and artistic playing.
- If you have questions about the excerpt, you can consult with your private or school teacher.

Ensemble Placement

- The primary criterion for placement is the student's playing, which includes factors such as tone quality, technique, correct instrument position, musicality, and accuracy of pitch and rhythm.
- Please note: Spring 2024 auditions are used only to determine ensemble placement for the 2024-2025 season. Seating within the ensemble may change throughout the season.
- Tuition Assistance: The DSYE is committed to serving all students, and no student will be denied membership in the ensembles due to financial concerns. Any student requiring assistance is encouraged to learn more at: <https://dubuquesymphony.org/youth-ensembles>

Ensemble Expectations

- Students are expected to practice their music in between rehearsals to a high artistic level.
- Students are expected to exhibit mature, respectful rehearsal behavior.

All questions, comments, and inquiries can be directed to:
Hannah Von Mulert, Director of Education & Outreach
hvonmulert@dubuquesymphony.org | 563.557.1677

Alto Sax / Bari Sax

SET 1

Concert C Major



Concert E \flat Major



Concert D \flat Major



Concert G Major



SET 2

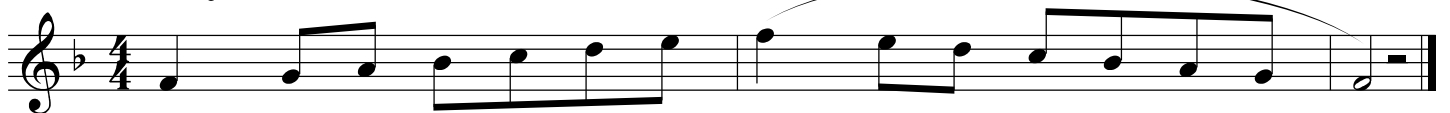
Concert F Major



Concert B \flat Major



Concert A \flat Major



Concert D Major



SET 1 & SET 2

Chromatic Scale



Bari Saxophone

Etude #1

Etude #1 musical score for Bari Saxophone. The score is in E-flat major and 4/4 time. It consists of 16 measures. The first measure starts with a piano (*p*) dynamic. Measures 1-2 are marked with a hairpin crescendo. Measures 3-4 are marked with a hairpin decrescendo. Measure 8 ends with a forte (*f*) dynamic. The piece concludes with a double bar line at measure 16.

Etude #2

Etude #2 musical score for Bari Saxophone. The score is in E-flat major and 3/4 time. It consists of 16 measures. The first measure starts with a piano (*p*) dynamic. Measure 3 has a crescendo (*cresc.*) marking. Measure 7 has a mezzo-forte (*mf*) dynamic. Measure 11 has a mezzo-forte (*mf*) dynamic. Measure 13 has a mezzo-forte (*mf*) dynamic. Measure 15 has a mezzo-forte (*mf*) dynamic. Measure 16 has a mezzo-forte (*mf*) dynamic. The piece concludes with a double bar line at measure 16.