



2728 Asbury Road, Suite 900  
Dubuque, IA 52001  
Phone (563) 557.1677  
Fax (563) 557.9841  
[www.dubuquesymphony.org](http://www.dubuquesymphony.org)

## 2024-2025 Dubuque Symphony Youth Ensembles Audition Information

### String Ensemble

#### Cello

##### Scales

- Perform all scales listed for your instrument, paying close attention to tone, intonation, evenness, and rhythmic accuracy.

##### Etudes

- Excerpts do not need to be memorized
- Prepare the excerpts in this packet to the best of your ability. Be sure to pay attention to the key signature, time signature, rhythms, slurs, strong tone, and artistic playing.
- If you are unfamiliar with the excerpt, you can consult with your private or school teacher. You can also listen to a recording or live performance of the piece in order to give yourself the proper style, tempo, and musical context.

##### Orchestra Placement

- The primary criterion for placement is the student's playing, which includes factors such as tone quality, technique, correct instrument position, musicality, and accuracy of pitch and rhythm.
- Please note: Spring 2024 auditions are used only to determine ensemble placement for the 2024-2025 season. Seating within the ensemble may change throughout the season.
- Tuition Assistance: The DSYE is committed to serving all students, and no student will be denied membership in the ensembles due to financial concerns. Any student requiring assistance is encouraged to learn more at: <https://dubuquesymphony.org/youth-ensembles>

##### Orchestra Expectations

- Students are expected to practice their music in between rehearsals to a high artistic level.
- Students are expected to exhibit mature, respectful rehearsal behavior.

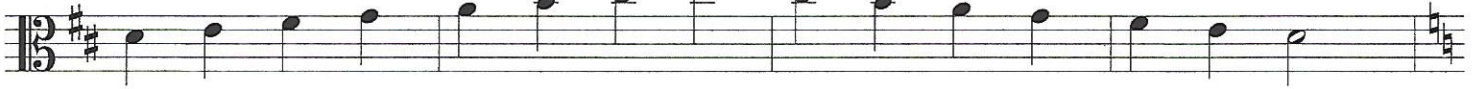
All questions, comments, and inquiries can be directed to:  
Hannah Von Mulert, Director of Education & Outreach  
[hvonmulert@dubuquesymphony.org](mailto:hvonmulert@dubuquesymphony.org) | 563-557-1677

# STRING ENSEMBLE AUDITION SCALES

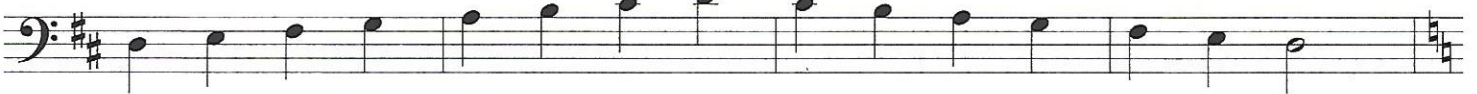
Violin



9 Viola



17 Cello



Bass



# Dubuque Youth String Ensemble

## Cello Audition Sheet

Tempo: Quarter note= approx. 104 for all excerpts

Excerpt 1- *Falconer* by Doug Spata

*mm 48-63*

Start

45 46 47 48 49 50 51 52 53 54 55 56 57 58 59 60 61 62 63

End

Excerpt 2- *C Here* by Seth Gamba  
mm 67-74

67

*aggressively*

*f*

72

End

Excerpt 3- *Beginning to m. 17*

SCHUMANN  
Arranged by Denis Wright

Not fast

*p*

*p*

*mf cantabile*

rit. a tempo

rit. a tempo

End