



## 2024-2025 Dubuque Symphony Youth Ensembles Audition Information

### Youth Orchestra

### Trombone

#### Scales

- Prepare all scales listed on the scale sheet. Please pay close attention to tone, intonation, evenness, and rhythmic accuracy. You will be asked for two of the scales in your audition.

#### Excerpt

- Prepare the excerpt(s) included in this packet to the best of your ability. If you are unfamiliar with the excerpts, you can consult with your private or school teacher. It is also recommended that you listen to a recording or live performance of the piece in order to give yourself the proper style, tempo, and musical context.

#### Trombone

1. Brahms' Tragic Overture, Op. 81- mm 88-93, mm 291-300, mm 395-398
2. Schubert Symphony No. 8, mvt 1-mm 176-194 \*Please read the alto clef part if able. If unable to read alto clef, reading in bass clef is acceptable.

#### Orchestra Placement

- The primary criterion for placement is the students playing, which includes factors such as tone quality, technique, dynamic range, musicality, and accuracy of pitch and rhythm.
- **Please note:** Spring 2024 auditions are used only to determine ensemble placement for the 2024-2025 season. Section seating may change throughout the year.
- Tuition Assistance: The DSYE is committed to serving all students, and no student will be denied membership in the ensembles due to financial concerns. Any student requiring assistance is encouraged to learn more at: <https://dubuquesymphony.org/youth-ensembles>

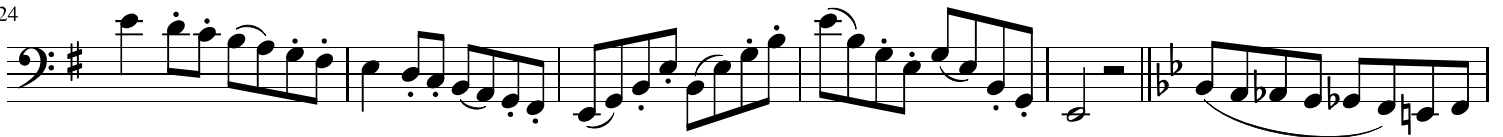
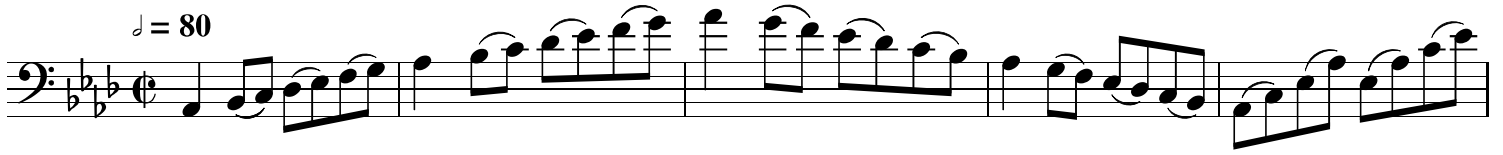
#### Orchestra Expectations

- Students are expected to practice their music in between rehearsals to a high artistic level.
- Students are expected to exhibit mature, respectful rehearsal behavior.
- Students are expected to keep a strong attendance record, missing no more than 2 rehearsals per trimester.

All questions, comments, and inquiries can be directed to:  
Hannah Von Mulert, Director of Education & Outreach  
[hvonmulert@dubuquesymphony.org](mailto:hvonmulert@dubuquesymphony.org) | 563.557.1677

# Trombone

$\text{♩} = 80$



# Johannes Brahms Tragic Overture

## TROMBONE III

Allegro, ma non troppo

8 Viol. I

16 4 **A** 12 **B** 8 **C** 25 **D** 18 **E** Tuba *pp*

88 *pp* 21 **F** 28 **G** 18

160 **H** 25 **I** 4 Viol.

196 3 **K** Molto più moderato (♩ = ♩) 24 **L** 15

247 7 **M** 2 Ob. I Fl.

264 **N** Tempo primo (♩ = ♩) (ma tranquillo) *pp* *dim.* *ppp*

278 1 **O** 5 Bsn. *p*

294 *legato* *dim.* 7 **P** 12 16

336 **Q** Viol. I, Ob. I 27 **R** 21 **S** 8 Viol. Hr., Trpt. *ff*

393 Viol. *f* 8 **T** 22

Franz Schubert  
Symphony No. 8 in B Minor (Unfinished)

Trombone I

Allegro moderato

1 24 Fl. I 6 A 23 1 G. P.

63 B *cresc.* 9 *ffz>* *fz>* *fz>* *fz fz fz fz fz fz fz fz fz fz* *fz*

82 *fz* *fz>* *fz>* *fz>* *fz>* *fz>*

91 C 10 3 1.1 2. *fz>* *ff>* *pp* *pp*

113 17 Viol. Fag. *fz>* *fz>* *fz>* *fz>* *fz fz fz fz*

141 4 *fz fz fz fz fz fz fz fz fz fz fz fz fz* *ff>* *ff>*

155 4 *ff>* *ff* *fz*

175 D Start *fz* *fz* *fz*

189 End *fz* *ffz>* *fz>* *ff* *fz*

206 10 E 22 Fl. I 6 F 27 1 G. P.

Franz Schubert  
Symphony No. 8 in B Minor (Unfinished)

Trombone 1

**I**

**Allegro moderato**

24 *FL I* 6

2-25 *fz fz* 30-35 *ff*

38 **A** 23 *G.P.* **B**

*fz* 39-61 *ffz >* *fz >* *fz >* *fz fz* *fz fz fz* *fz fz fz* *fz fz fz* *cresc.*

71 9

*fz* 72-80 *fz* *fz* *fz >* *fz >* *fz >*

89 **C** 10 3

*fz >* *fz >* *fz >* 94-103 *ff* *pp* 107-109

110 1. 2. 17 *Viol., Fag.*

*pp* 115-131 *fz >* *fz >*

136

*fz >* *fz >* *fz* *fz fz* *fz* *fz fz fz* *fz fz fz* *fz fz fz* *fz fz fz*

146 4 4

*ff* 150-153 *ff* 158-161 *ff*

165 4 **D** **Start**

166-169 *ff* *fz fz*

182 *fz* *fz* *fz* *ffz >* **End**

195 4 2 10 **E** 22

*fz >* 198-201 *ff* *fz* 204-205 *ff* *fz* 208-217 218-239

240 *FL I* **F** 6 27 *G.P.*

*f* *fz* 244-249 *ff* *fz* 253-279