

2024-2025 Dubuque Symphony Youth Ensembles Audition Information

Youth Orchestra

French Horn

Scales

- Prepare all scales listed on the scale sheet. Please pay close attention to tone, intonation, evenness, and rhythmic accuracy. You will be asked for two of the scales in your audition.

Excerpt

- Prepare the excerpt(s) included in this packet to the best of your ability. If you are unfamiliar with the excerpts, you can consult with your private or school teacher. It is also recommended that you listen to a recording or live performance of the piece in order to give yourself the proper style, tempo, and musical context.

French Horn

1. Brahms' Tragic Overture, Op. 81- mm 415- End
2. Schubert Symphony No. 8, mvt 1 (in D, transpose to F)- mm 134-149

Orchestra Placement

- The primary criterion for placement is the students playing, which includes factors such as tone quality, technique, dynamic range, musicality, and accuracy of pitch and rhythm.
- **Please note:** Spring 2024 auditions are used only to determine ensemble placement for the 2024-2025 season. Section seating may change throughout the year.
- Tuition Assistance: The DSYE is committed to serving all students, and no student will be denied membership in the ensembles due to financial concerns. Any student requiring assistance is encouraged to learn more at: <https://dubuquesymphony.org/youth-ensembles>

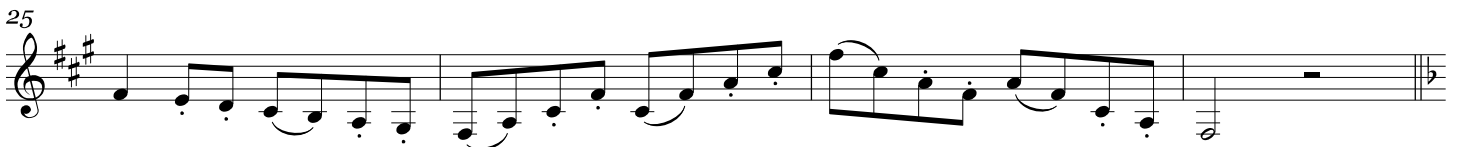
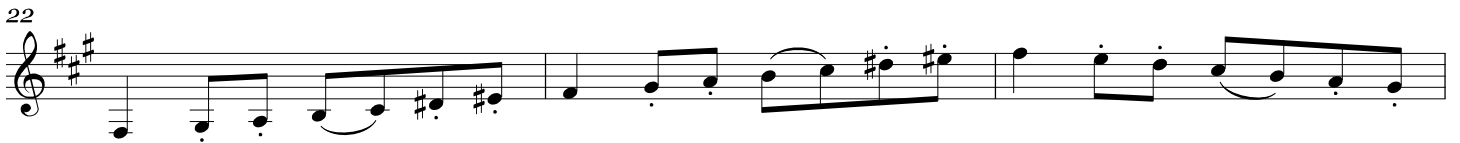
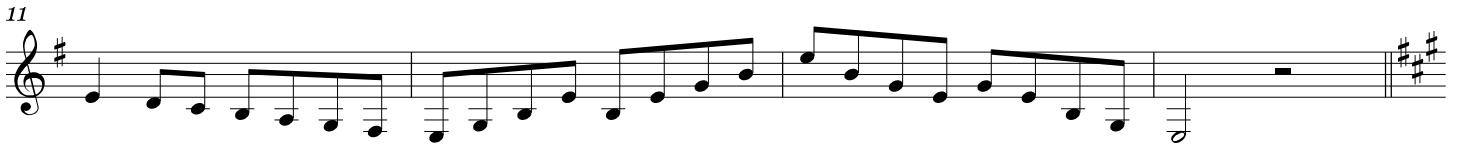
Orchestra Expectations

- Students are expected to practice their music in between rehearsals to a high artistic level.
- Students are expected to exhibit mature, respectful rehearsal behavior.
- Students are expected to keep a strong attendance record, missing no more than 2 rehearsals per trimester.

All questions, comments, and inquiries can be directed to:
Hannah Von Mulert, Director of Education & Outreach
hvonmulert@dubuquesymphony.org | 563.557.1677

Horn in F

$\text{♩} = 88$



Brahms — Tragic Overture

Horn III in F

169 *sf sf sf sf sf*

178 *ff* **I** 5

191 *p pp pp*

205 *p* **K** *Molto più moderato* ($\text{♩} = \text{♩}$) 22 **L** 15 7 **M** 10

284 **N** *Tempo primo* ($\text{♩} = \text{♩}$)
(*ma tranquillo*) **O** 22 **P** 12
Tbns. 13 *Vla.* *dolce*

320 *Hr. I* *f marc.* **Q** 1 6

349 12 **R** 8 *Bsns. Vcl. B.*

376 *p cresc.* *ff* **S** 3 1

386 *f*

395 *f* 4

407 **T** 6 *Vcl. B.* *un poco sost.* **Start** *f dim.* *p*

423 *in tempo.* *f cresc.* *ff*

End

Franz Schubert
Symphony No. 8 in B Minor (Unfinished)

Horn I

Allegro moderato

in D

1 16 *Ob. I*

fz *p* *p* *cresc.*

28 *fz fzfp* *p* *cresc.* *f* *ff* *fz fp* **A**

39 *pp* *pp* 10

57 *G. P.* *ffz* *fz* *fz* **B**

69 *cresc.* *fz fz fz fz fz fz fz fz fz* *f* 5

81 *fz* *fz* *fz* *fz* *fz* *fz* *fz* *fz* *fz* *fz*

91 *fz* *p* *ff* *pp* **C** 3 3

107 *Viol. I* **Start** 17 *f* 1. 2.

137 *cresc.* *ff*

147 **End** *ff* 4 4 4

170 *ff* *fz* *fz* **D** 1 3